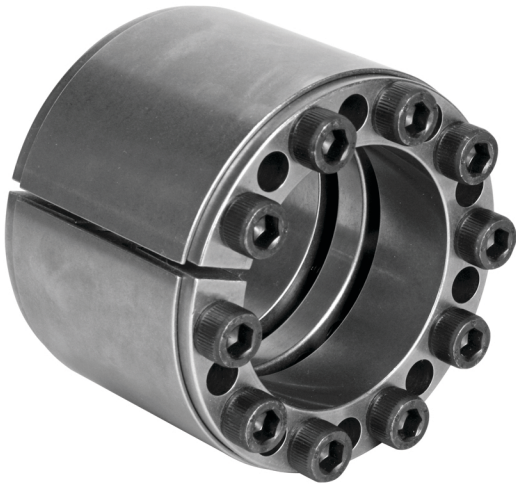


# Mining Shovels & Excavators Benefit From the Use of Keyless Locking Devices

*Climax keyless locking devices offer an alternative for clumsy clevis pin retention and brake rotors in excavators and dragline shovels.*



## For Rotating Applications:

- Keys, keyways, and set screws are prone to shaft damage and fretting corrosion
- Splines, prone to fretting and require expensive machining
- Shrink or press fits that are difficult to install and remove
- QD/Taperlock bushings use keyways where wallowing occurs causing fretting and backlash
- Hex nut keyless bushings are not self-locking and dynamic loading can loosen the connection

One of the most commonly used pieces of heavy mining equipment are excavators or power shovels. Every major construction project requires their use. Tasks such as removing large objects, digging trenches, site grading, hauling, demolition, mining, snow removal, would be practically impossible without this machinery.

Construction machinery is constantly subjected to the harshest environments and toughest loads for which an engineer can design. Maintenance is an important factor in keeping costs down and ensuring that construction site progress stays on schedule. Moving parts are expected to wear out over time especially where traditional keyed or interference fits are used. Climax Series C133, C405, or C415 KLDs are used in clevis pin retention and to mount brake rotors in excavators and dragline shovels. KLDs eliminate fretting corrosion, wallowing, and backlash of keyed connections. Their ability to transmit high torque and bending capacities and eliminate axial movement during installation makes them an ideal problem solver over traditional connections.

Climax keyless locking devices only require a straight bore with generous tolerances reducing component machining and complexity cost. When maintenance is required, KLDs are installed and removed using simple hand tools; no heat or high forces are required.

Climax offers an extensive line of keyless locking devices from stock and has the ability to engineer custom designs.





RBC has been producing bearings in the USA since 1919. In addition to unique custom bearings, RBC offers a full line of standard industrial and aerospace bearings, including:



### Tapered Roller Thrust Bearings

Case-hardened tapered roller thrust bearings for oilfield top drives and swivels. Available in full complement, maximum capacity versions.



### Cylindrical Roller Bearings

Cylindrical roller bearings designed for mud pump pinion and eccentric positions. Fully interchangeable to industry standards.



### Spherical Plain Bearings

Radial, angular contact, extended inner ring, high misalignment. **QuadLube**®, **ImpactTuff**®, **SpreadLock**® Seal, **CrossLube**®, **DuraLube**™, and self-lubricating bearings. Available in inch and metric sizes.



### Keyless Locking Devices

Mechanical bushings used to connect power transmission components onto rotating shafts. Without the use of keyways, KLDs eliminate the problems associated with backlash including fretting, corroding, and wallowing.



### Self-Lubricating Bearings

Radial, thrust, rod ends, spherical bearings, high temperature, high loads. Available in inch and metric sizes. **Fiberglide**® self-lubricating bearings.



### Ball Bearings

Precision ground, semiground, unground. High loads, long life, smooth operation. **Nice**® branded products are offered in caged and full complement configurations.



### Thin Section Ball Bearings

Standard cross sections to one inch. Bore sizes to 40 inches. Stainless steel and other materials are available. Seals are available on all sizes and standard cross sections. Super duplex configurations.



### Needle Roller Bearings

**Pitchline**® caged heavy duty needle roller bearings ideal for cross head bearings applications. These double row bearings are available in single row and **Tandem Roller**® versions.



### Tapered Roller Bearings

Single, double, & multi row versions available for main bearing positions in mud pumps, gear boxes, etc. Bearings are constructed of case hardened steel washers and rollers with bore size of 11" or greater.



### Lubron® Bearings

**Lubron**® self-lubricating bearings designed and custom manufactured in most any size, material and bearing configuration. Applications include hydro power and water control, nuclear power generation, infrastructure, architecture, offshore marine, industrial, machinery and heavy equipment.



### Rigid Couplings

Shaft couplings serve as components to time, join, or align shafts at lower speeds and torque, especially when zero backlash is desired. Made from mild steel with a black oxide finish, type 303 stainless steel, or aluminum. Available in inch and metric sizes.



### Cam Followers

Standard stud, heavy stud, yoke type, caged roller followers. Patented **RBC Roller**® cylindrical roller cam followers, **HexLube**® universal cam followers, airframe track rollers.



### Commercial Rod Ends

Commercial and industrial, precision, Mil-Spec series, self-lubricating, and aircraft. Sold under the **Heim**®, **Unibal**®, and **Spherco**® names. Available in inch and metric sizes.



### TP Series Bearings

RBC's TP Series cylindrical roller thrust bearings ideal for crane hooks, oil well swivels, winch systems, and gear boxes. Fully interchangeable with industry standard offering.



### Shaft Collars

Used to position or locate a component on a shaft. Made from mild steel, type 303 or 316 stainless steel, aluminum, or acetal. Available in inch and metric sizes.



### Specials

RBC manufactures many specialty bearings for the aerospace, oil and energy, semiconductor equipment, packaging, transportation, and other industries.



### PIC Design

Complete line of precision gears, precision hardware, timing belts, pulleys, and linear motion systems. Industries served include industrial, aerospace, defense, medical, robotics and automation, material handling, and assembly. Custom design support for unique applications.