



## **CONTI® PROTECT · CONTI® INSPECT**

High-Performance Belt Monitoring Systems  
for ContiTech Conveyor Belts

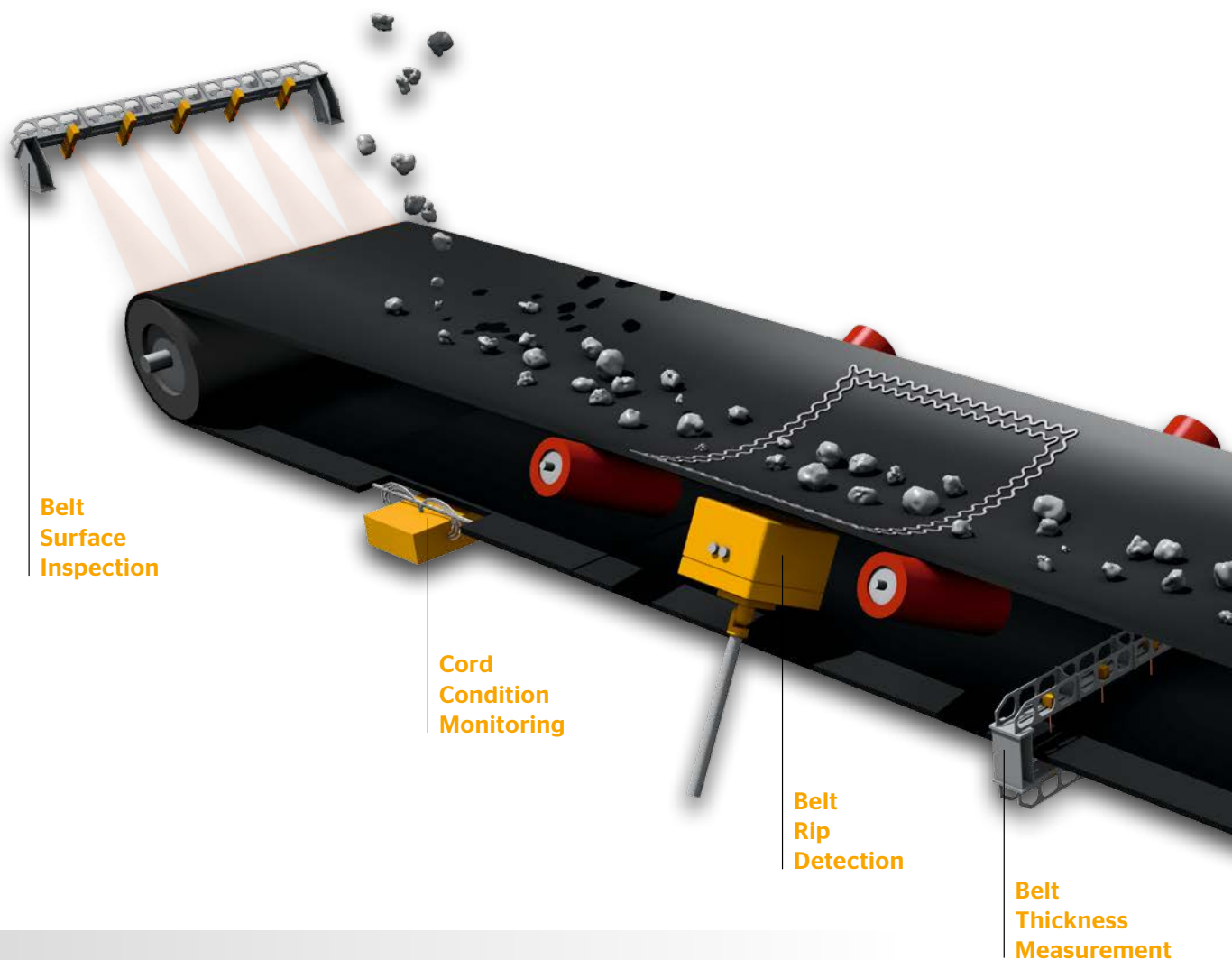
# CONTI® PROTECT · CONTI® INSPECT

## High-Performance Belt Monitoring Systems

### For ContiTech Conveyor Belts

ContiTech Conveyor Belt Group offers a wide range of steel cord and textile conveyor belts, carefully matched service material as well as special products and belt monitoring systems.

ContiTech CONTI® PROTECT and CONTI® INSPECT belt monitoring systems support conveyor belt operators by maximizing the safety and the lifetime of their belts and ensure system reliability and availability.



### For more than 140 years

Continental ContiTech develops, manufactures and markets high-tech products and solutions for automotive and industrial applications.

Backed by outstanding conveyor belt technology and expertise, ContiTech can be found wherever bulk materials are extracted, processed and distributed. Making materials available in an environmentally friendly manner which presents a technological challenge, time and time again, since bulk material belts are scattered throughout the world.

### **CONTI® PROTECT** **Belt Protection Systems**

The CONTI® PROTECT series detects and prevents costly conveyor belt damage. The CONTI® PROTECT was developed in-house and manufactured according to automotive standards.

#### **The series consists of:**

- › **Belt Rip Detection**
- › **Splice Elongation Measurement**

### **CONTI® INSPECT** **Belt Inspection Systems**

The CONTI® INSPECT range minimizes downtime, increases belt lifetime and system availability.

#### **ContiTech offers:**

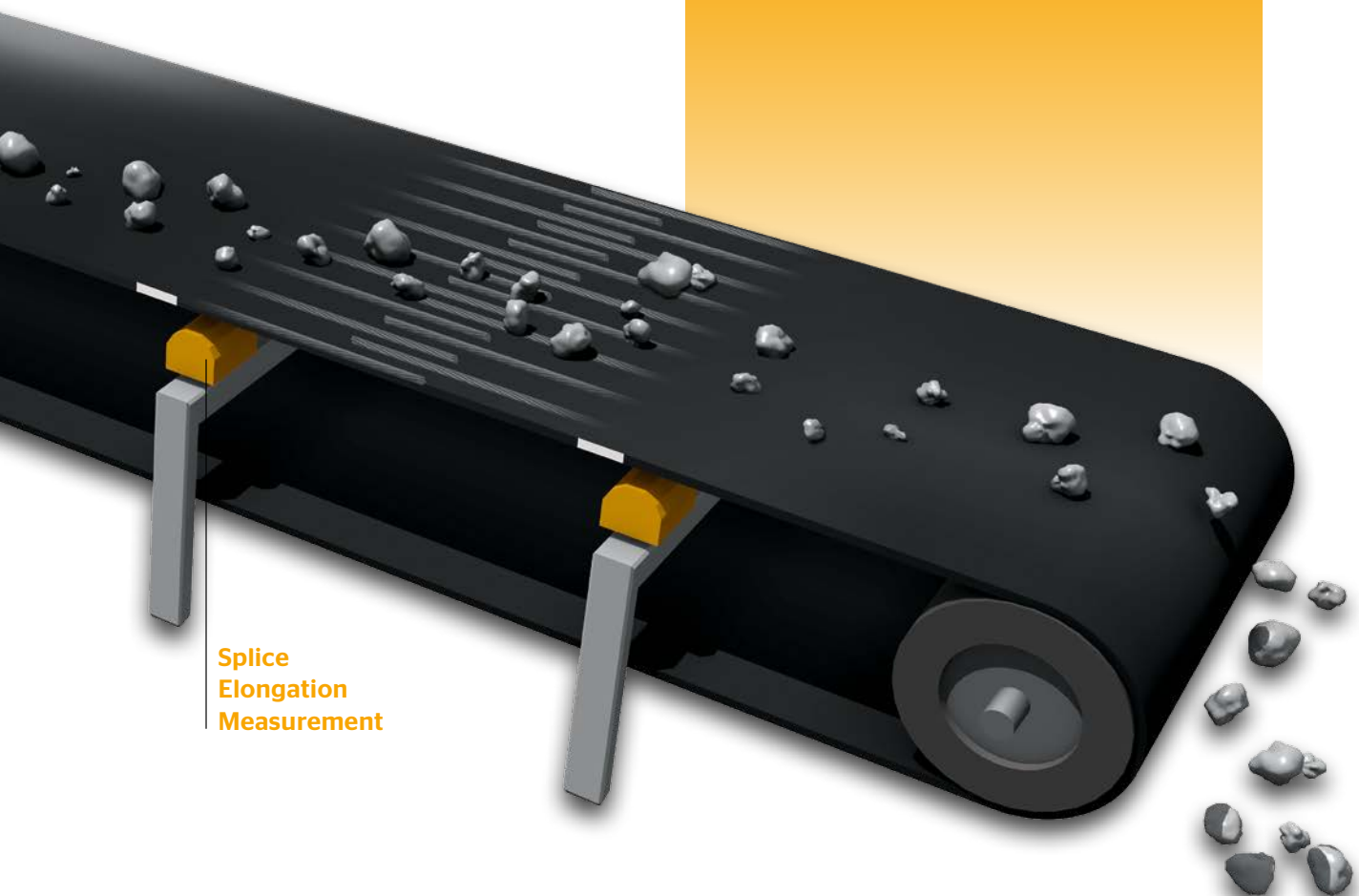
- › **Belt Thickness Measurement**
- › **Belt Surface Inspection**
- › **Cord Condition Monitoring**

Our systems produce a customized belt map according to your requirements and report all important belt-related data.

We offer installation support for all our systems. For the CONTI® PROTECT systems we offer on-site service as well as online support. If required, we take care of the complete inspection of your conveyor belt with the help of our CONTI® INSPECT systems.

### **Your Benefits**

- › Prevent costly damage
- › Prevent downtime incidents
- › Increase belt lifetime
- › Increase system availability and reliability
- › Flexible operation according to your requirements



**Splice  
Elongation  
Measurement**

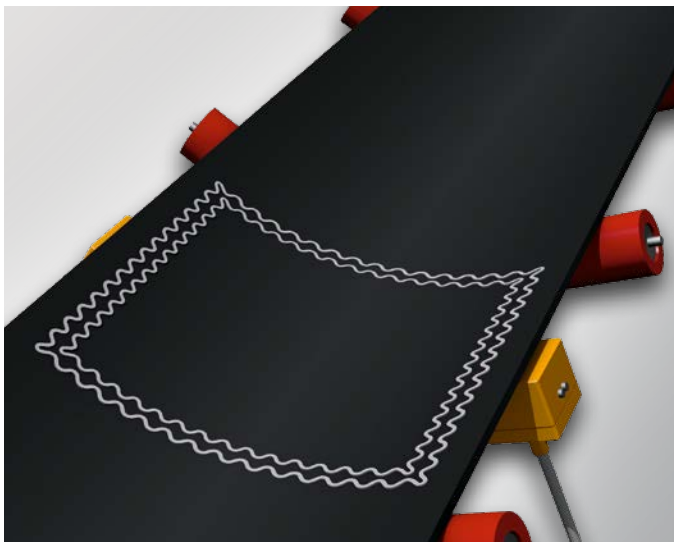
# CONTI® PROTECT

## Belt Protection Systems

### Saves Investment, Ensures Availability

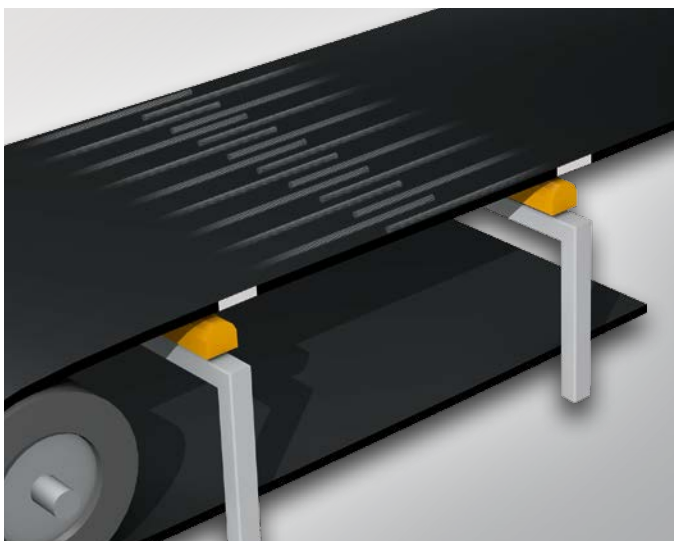
The CONTI® PROTECT Series is designed, manufactured and tested according to automotive standards. Therefore CONTI® PROTECT Belt Rip Detection and CONTI® PROTECT Splice Elongation Measurement achieve a high quality level, providing outstanding safety for conveyor belts. Your conveyor belts are perfectly secured, ensuring high availability by avoiding costly belt rips and severe splice failures.

Both systems of the CONTI® PROTECT family will stop the conveyor belt in emergencies. Using a user-friendly 15" touch screen, easy interaction with the systems is provided. If needed, the CONTI® PROTECT series can also be maintained worldwide via remote control by ContiTech's experienced German engineers.



#### CONTI® PROTECT Belt Rip Detection

- › Stops the belt in emergencies
- › Detects longitudinal belt rips early
- › All kinds of sensor loops are detected
- › As many points of surveillance as desired are possible
- › Can be maintained worldwide via remote control
- › Installation by ContiTech engineers available



#### CONTI® PROTECT Splice Elongation Measurement

- › Stops the belt in emergencies
- › Precision length measurement of splices
- › Detects irregular length changes of the splice during operation at full belt speed
- › Calculates the splice elongation
- › Can be maintained worldwide via remote control
- › Installation by ContiTech engineers available



# CONTI® INSPECT

## Belt Inspection Systems

### Reduces Maintenance Cost, Improves Performance

The CONTI® INSPECT series is designed to detect damage to the conveyor belt derived from the operation of the conveyor, in order to maintain the high quality level of the conveyor belts. CONTI® INSPECT enables continuous belt scanning during conveyor operation at full belt speed. As a result, inspection time, cost and effort can be reduced to a minimum. The CONTI® INSPECT System allows maintenance to be planned easily, fast and in advance for scheduled conveyor downtimes.

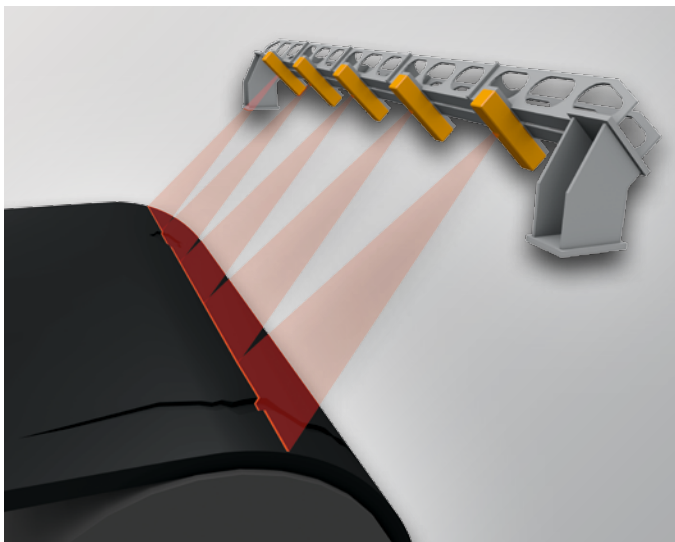
The CONTI® INSPECT series provides Belt Thickness Measurement, Belt Surface Inspection and Cord Condition Monitoring. These systems are mobile and can be used for all appropriate conveyors. A full service by our well-trained ContiTech field engineers is available. A detailed report of the inspection is generated and provided with a precise description of the abrasive wear, damage to the belt surface and the state of the tensile carrier, i.e. the steel cords.





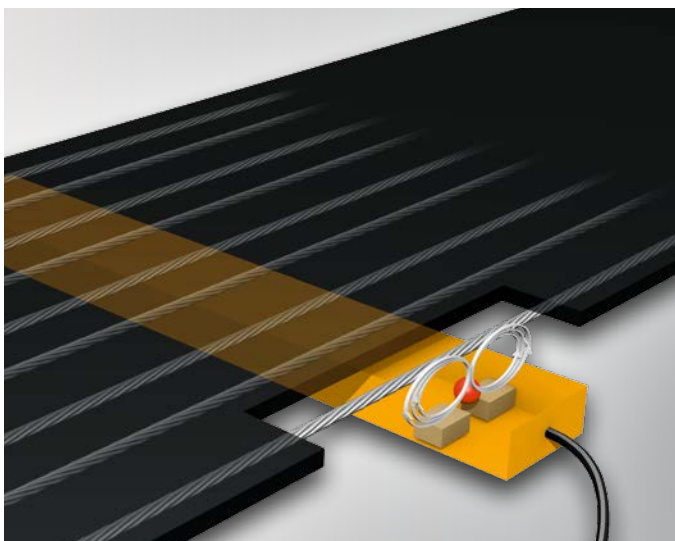
### CONTI® INSPECT Belt Thickness Measurement

- › Measures the belt thickness (0 mm - 55 mm) effectively
- › Measures in the area where the wear actually takes place
- › Only one belt revolution required
- › Predicts the remaining lifetime of the belt (based on top cover thickness)
- › Avoids unnecessary belt replacements



### CONTI® INSPECT Belt Surface Inspection

- › Scans whole belt surface by line laser technology
- › Generates a digital belt map and detects all cover damages
- › Virtual 3D analysis of variable defects
- › Automatic reporting with adjustable ranking of surface damages
- › Remaining lifetime estimate
- › Pre-analysis for manual belt inspection and repairs



### CONTI® INSPECT Cord Condition Monitoring

- › Continuous scanning procedure with real-time reporting at full belt speed
- › Virtual 3D reporting with automatic splice identification and fault alarms
- › No permanent magnetization of the belt required
- › Robust design for all environmental and weather conditions
- › Detects steel cord damage early
- › Monitors splices



## ContiTech Global Belt Service

### Today and Tomorrow

Faced with our customers' requirements for maximum quality and flexibility, we are continuously improving our belt service. Our mastery of next-generation technology means we are already able to meet our customers' future needs. Being one step ahead in scheduling flexibility makes our Global Service Team the first choice for conveyor belt services.

With high-end conveyor belt technology from ContiTech, materials handling systems run reliably and cost-effectively and are environmentally friendly. As a development partner and systems supplier providing expertise, products and services, we serve the mining industry, machine and equipment manufacturers and numerous other industries. We are a one-stop shop offering a full range of equipment as well as comprehensive service, from installation through to start-up of operations worldwide.

As a systems supplier, we can offer everything required for every conveyor system: A complete range of maintenance and repair materials, high-quality tools and belt system accessories.

**We are the partner to keep your future in motion.**



# ContiTech



## Conveyor Belt Group

Market segment  
Mining World

### Contact

ContiTech Transportbandsysteme GmbH  
D-37154 Northeim, Germany  
E-mail: [beltmonitoring@cbg.contitech.de](mailto:beltmonitoring@cbg.contitech.de)  
[www.contitech.de/cbg-bms-en](http://www.contitech.de/cbg-bms-en)

### Your local contact

[www.contitech.de/contactlocator](http://www.contitech.de/contactlocator)



## ContiTech. Engineering Next Level

As a division of the Continental Group, ContiTech is a recognised innovation and technology leader in natural rubber and plastics. As an industry partner with a firm future ahead of us, we engineer solutions both with and for our customers around the world. Our bespoke solutions are specially tailored to meet the needs of the market. With extensive expertise in materials and processes, we are able to develop cutting-edge technologies while ensuring we make responsible use of resources. We are quick to respond to important technological trends, such as function integration, lightweight engineering and the reduction of complexity, and offer a range of relevant products and services. That way, when you need us, you'll find we're already there.