



MOUNTED SPHERICAL ROLLER BEARINGS

SAFETY MOUNT™

Safer. Faster. Easier.



The Dodge® Safety Mount spherical roller bearing lives up to its namesake—safety.

For more than 140 years, Dodge continues to be the leader in the mechanical power transmission industry. Dodge products are produced with pride and manufactured with safety in mind, and Safety Mount is no exception.

Safety Mount is available in various sizes and uses a patented, built-in mounting system to reduce installation time up to 75 percent compared to traditional products found in industrial applications. This bearing is manufactured in the USA, resulting in shorter lead times and faster stock replenishment.

The bearing comes ready to install out of the box, is pre-lubricated, and includes a triple-lip seal that prevents contamination. Safety Mount saves valuable time and money. The innovative mounting design uses fasteners to eliminate the need for unsafe heavy blows of a hammer.

Safer

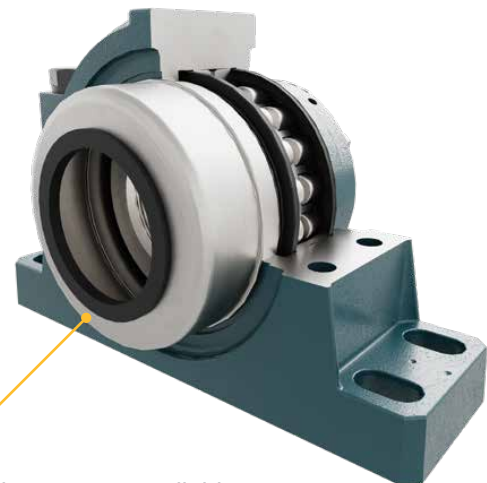
- Tightening of fasteners replaces blows of a hammer
- New locking mechanism

Faster

- Up to 75 percent faster than traditional SAF installations
- Uses common tools
- Mounts and dismounts from the same side of bearing

Easier

- New lock plate for simple installation
- Installation/removal only requires one person
- Decreased possibility of contamination because it is assembled, sealed, and lubricated at the factory



End covers are available as an optional accessory to keep workers safe from rotating shafts.

The versatile bearing solution

Safety Mount options

Safety Mount is offered in a variety of housing styles and shaft sizes.



Seal options for harsh applications

Safety Mount features a triple-lip contact seal and corrosion-resistant flinger sealing system, which prevents contamination from entering the product during installation and operation. For high-speeds or high-temperature applications, Safety Mount is offered with a labyrinth seal option, which features a corrosion-resistant flinger and a steel clearance seal. Both seal options offer maximum sealing protection to extend the service life of the bearing.

Highly reliable even in the harshest environments, Safety Mount is ideally suited for bulk material and air handling applications, as well as other demanding industrial applications.

Triple-lip seal

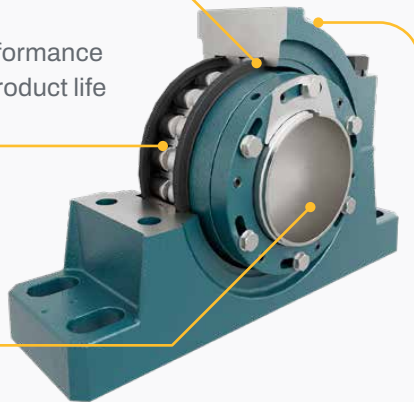
- Optimizes performance and extends product life

Pre-lubricated

- Reduces contamination risk

Shaft-ready installation

- Minimizes installation time to maximize uptime



Sensor ready

- Allows for Dodge sensor installation to remotely monitor bearing health
- Reduce downtime, improve reliability, and operate safely

Product specifications

Shaft size	(mm)	ISAF	Imperial	Imperial-E	ISN
4-15/16"	115-125	✓	✓	✓	✓
5-7/16"	135	✓		✓	✓
5-15/16"	140-150	✓		✓	✓
6-7/16"	160-170	✓		✓	✓
7"	—	✓		✓	✓

Value summary



Custom parts and modifications



Industry-leading web-based tools



USA manufacturing means quick response and stock replenishment



100+ dedicated Dodge Field Sales Engineers



USA-based customer service

